

SITE LOCATION MAP

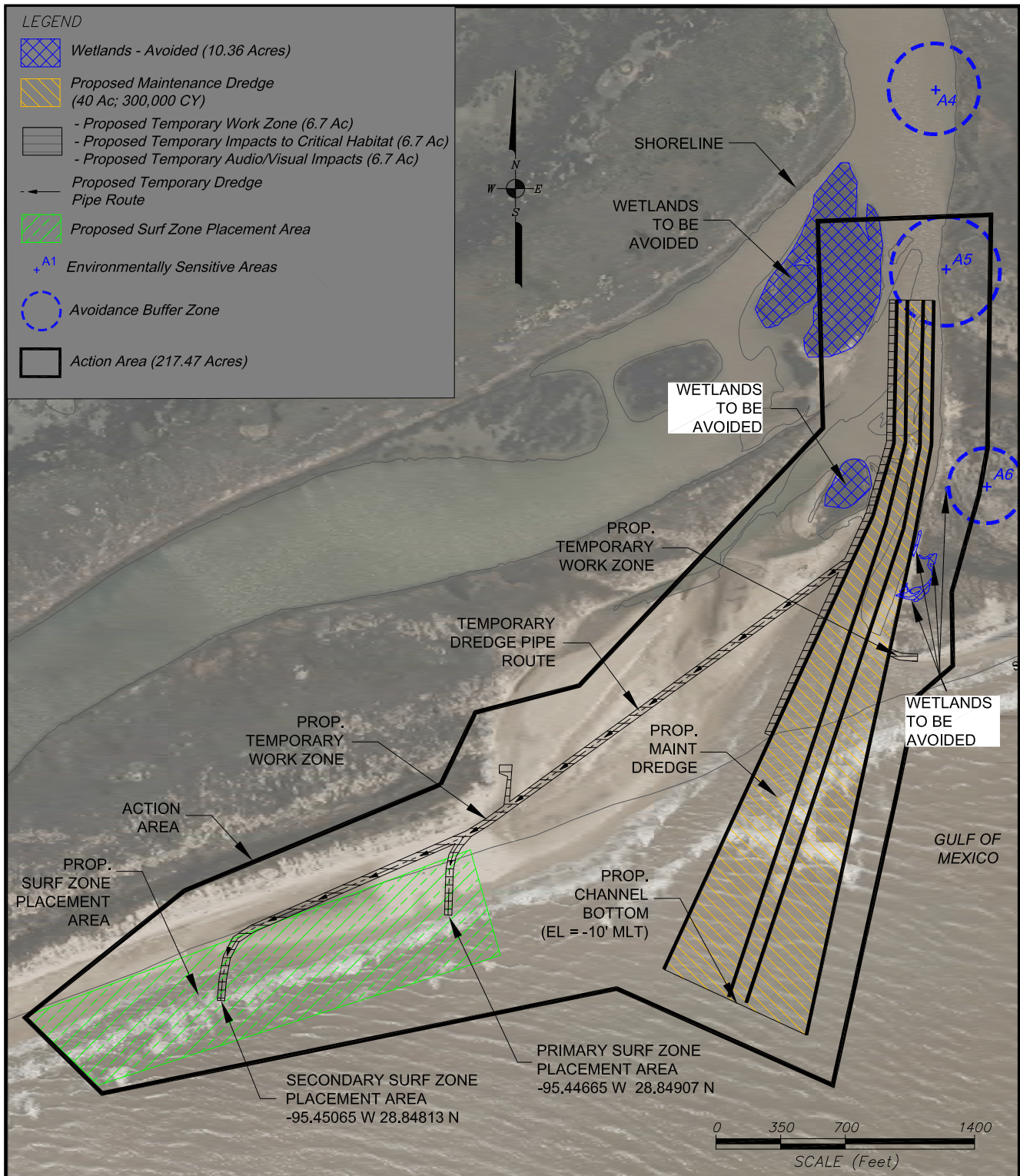
Project #: 9335N-IP
For: Brazoria County Engineering Department
Location: San Bernard River and GICWW
Brazoria County, Texas

REVISIONS	
April 28, 2017	by MDB

BERG•OLIVER ASSOCIATES

ENVIRONMENTAL SCIENCE & LAND USE CONSULTANTS
14701 ST. MARY'S LANE, SUITE 400
HOUSTON, TEXAS 77079 PHONE (281)589-0898 <http://www.bergoliver.com>





PROPOSED SAN BERNARD RIVER RESTORATION PLAN VIEW

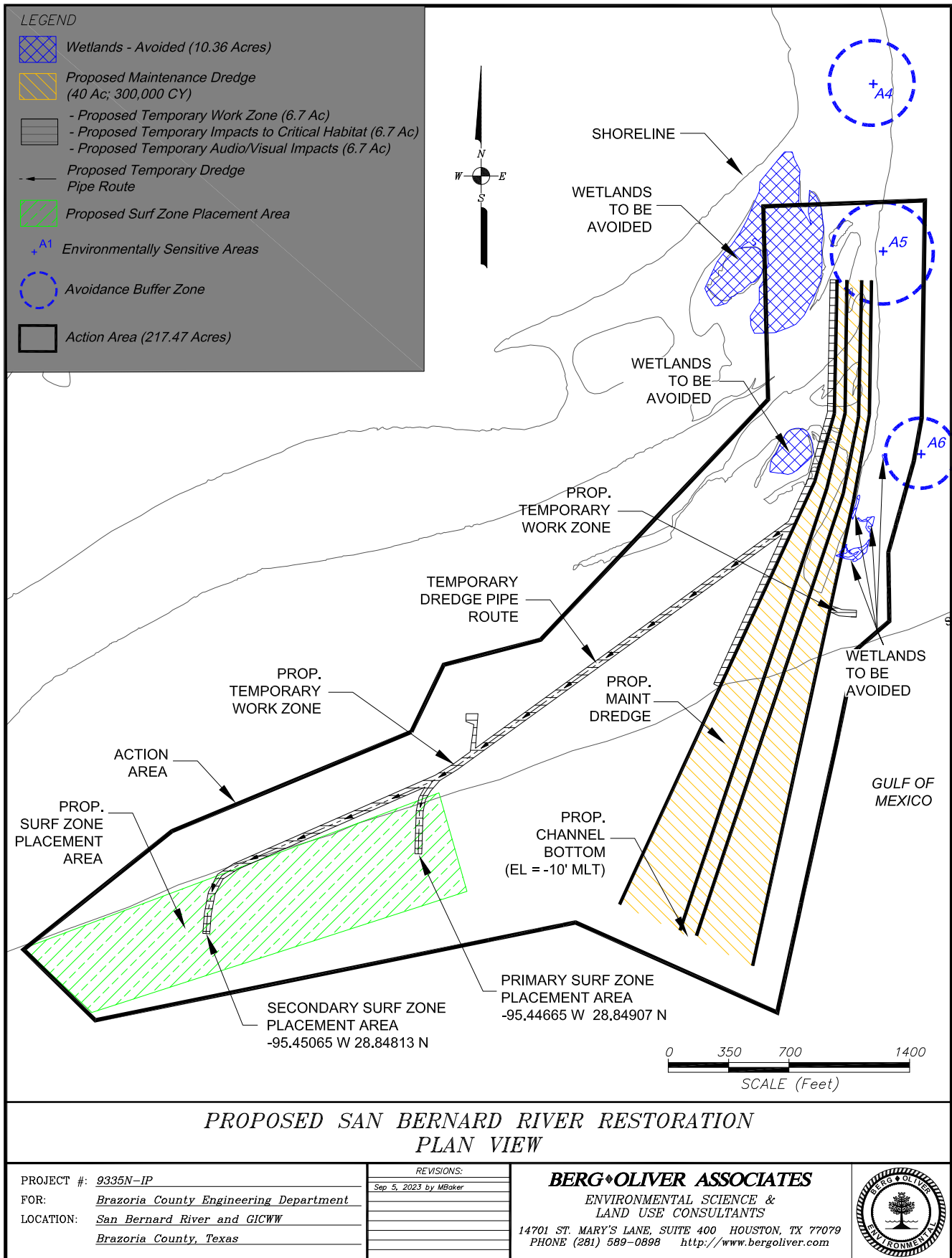
PROJECT #: 9335N-IP
FOR: Brazoria County Engineering Department
LOCATION: San Bernard River and GICWW
Brazoria County, Texas

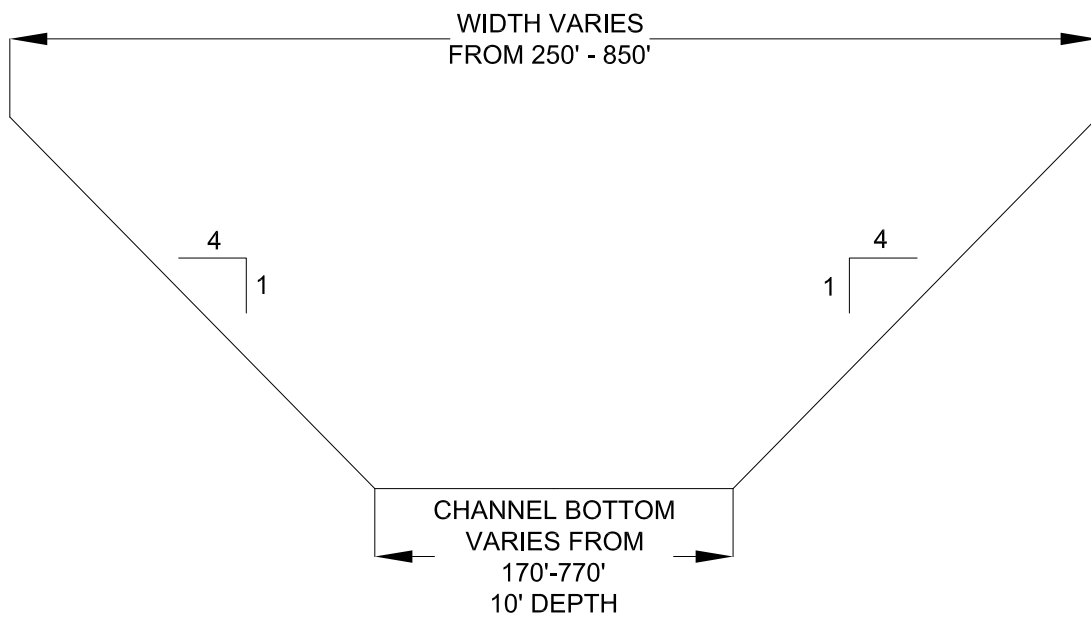
REVISIONS:
Sep 5, 2023 by MBaker

BERG ♦ OLIVER ASSOCIATES

ENVIRONMENTAL SCIENCE &
LAND USE CONSULTANTS
14701 ST. MARY'S LANE, SUITE 400 HOUSTON, TX 77079
PHONE (281) 589-0898 <http://www.bergoliver.com>







TYPICAL CROSS SECTION OF PROPOSED MAINTENANCE DREDGE

PROJECT #: 9335N-IP
 FOR: Brazoria County Engineering Department
 LOCATION: San Bernard River and GICWW
Brazoria County, Texas

REVISIONS:

BERG ♦ OLIVER ASSOCIATES

ENVIRONMENTAL SCIENCE &
LAND USE CONSULTANTS

14701 ST. MARY'S LANE, SUITE 400 HOUSTON, TX 77079
 PHONE (281) 589-0898 <http://www.bergoliver.com>



